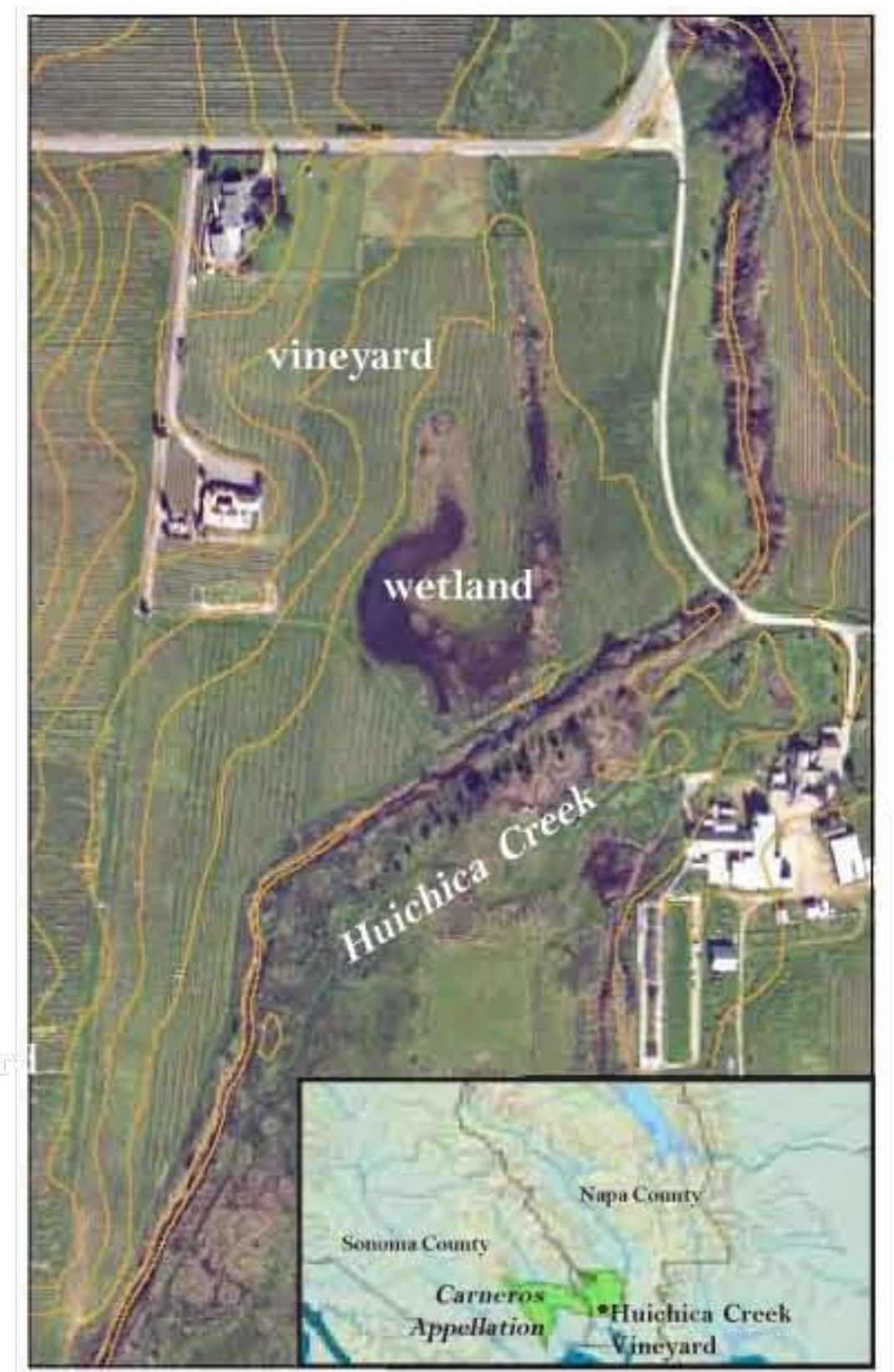


Huichica Creek Vineyard

Integrating Agriculture and Wildlife Habitat



Grassland and wetland habitat

Planting native grasses and trees within the vineyard produces habitat for many types of wildlife: nesting birds, reptiles, amphibians, small mammals, and insects.



The Carneros Land Stewardship Foundation funded the doubling in area of native perennial grasses in the wetland. Students from the Student and Landowner Education and Watershed Stewardship (SLEWS) program planted Creeping wildrye, *Leymus triticoides*.

Napa County RCD purchased the property in 1991 with proceeds from a grant from the State Coastal Conservancy.

The 21 acre property includes:

- 14 acres is vineyard
- 6 acres of riparian corridor and wetland

Napa-Solano Audubon members counted 28 bird species at the vineyard in January 2009. Six species of nesting waterfowl have been found on the property:



- Mallard
- Northern shoveler
- Gadwall
- American widgeon
- Cinnamon teal
- Canada goose

Riparian habitat

Stabilizing the creek banks and planting native trees and shrubs has created a diverse and shaded habitat for aquatic life and has reduced the amount of sediment input into the creek.

NRCS stabilized a quickly eroding bank by installing and revegetating an experimental "bunker" structure that also provides underbank habitat.



The RCD and its partners have improved the riparian corridor along Huichica Creek by installing willow revetments and planting trees and bulrushes.

